

GAME DESCRIPTION

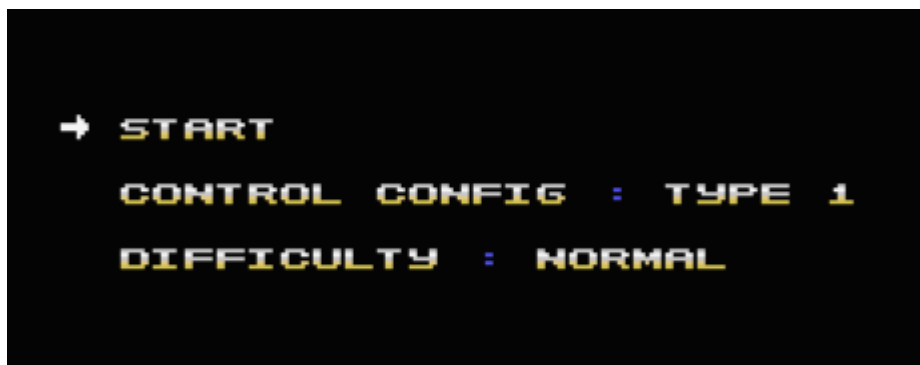
Bomb'n blast is a puzzle game inspired by Tetris and Bombliss, but the rules are not exactly the same.

The aim of the game is to empty 25 levels with the help of shapes falling from the top of the screen, by making lines containing bombs.

More lines you make, more powerfull the bomb of the line will be, making chain reaction to empty the level.

HERE'S HOW TO PLAY

Before starting :



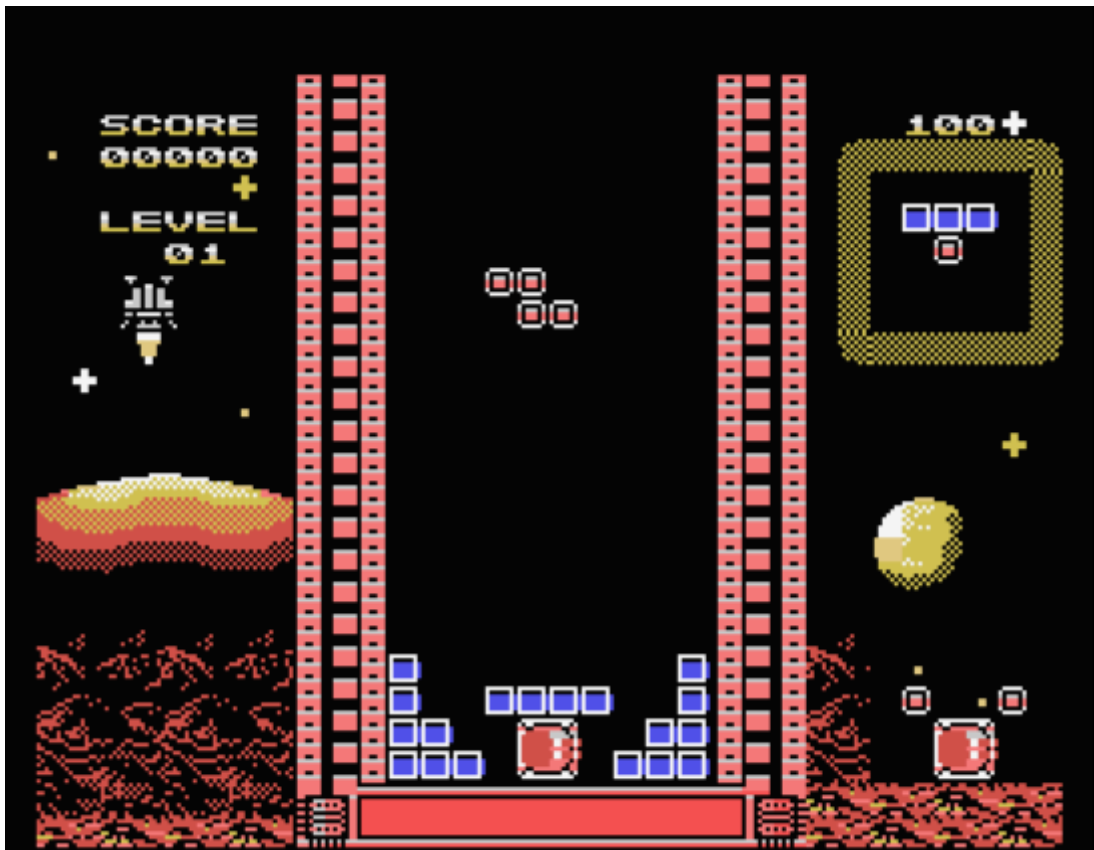
Move up and down with the controller to move the arrow in front of an option, and push a button to change an option.

You can choose 2 control config, that change the button control (Button 1 : Clockwise, Button 2 : counter Clockwise)

There are 4 difficulty mode : easier, normal, harder, hardest

Choose Start to begin the game.

Game screen :



This is a level of the game. Top right, you see the number of shape resting for erasing the level. Under that number, you can see the next shape coming in game.

About the shape : Blue brick is a normal part of the shape, red brick is a bomb.

Top left show you the score, and the number of the current level.

Goal :

Destroy all the brick by making lines and explode bomb with no more than 100 pieces.

If you do one line, all the bomb of the line will explode like this :



It's a 7x1 blast.

If you 2 two lines the blast will be more powerfull (7x3), and so on.

If you align 4 bomb in a square, a mega bomb will be created :



Destroying a megaBomb will do an huge blast.

If a blast, encounter another bomb, there will be chain reaction !!

SCORING :

Calculating the score is easy, if you empty the level with only 4 pieces the score for the level will be $100 - 4 = 96$ points. So if you want to do an hiscore, be effective in placing your shapes !

LEVEL OF DIFFICULTY :

EASIER : Every shape will contain 2 bombs, so it will be more easy to create megaBomb. If you empty 98% of the level, the game will give you 3 shapes will full bomb shape :



NORMAL : Same as EASIER, but every shape contain only 1 bomb

HARDER : Same as Normal, but if you empty the level at 98%, you will not receive help with full bomb shape !!

HARDEST : Same as Harder, but you will not see the next shape coming.